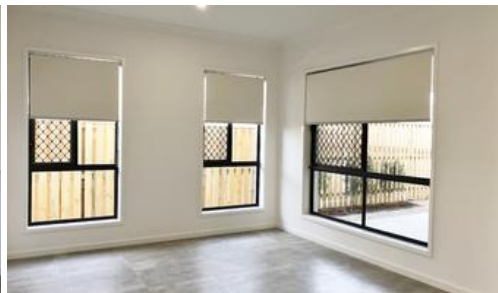


Sold



Unit 2, 2 Girtin Cct, Pimpama



## NEW AND READY NOW IN PACIFIC COVE - FULL TURN KEY WITH DUCTED AIR.

Location, Location! Located in the predominantly owner occupied, Pacific Cove estate in Pimpama. Pacific Cove is a boutique master planned community found in the Northern Gold Coast growth corridor. This uniquely designed and impressive 218m2 duplex equipped with DUCTED AIR is ready to be your new home!

This BRAND NEW high quality home with luxury inclusions has 4 spacious and well-appointed bedrooms all with built-in wardrobes, 2 bathrooms, open plan living and dining, and double garage. The master being at the front of the property and separate from the other bedrooms, features a large walk-in robe and stylish dual basin ensuite.

The open plan living and dining space is perfect for entertaining and flows seamlessly onto the tiled alfresco with sliding stacker doors. The contemporary and stylish kitchen features luxury pendant lights, stone bench tops, 900mm stainless steel gas cooktop and under bench oven, dishwasher, plenty of cupboard space and overlooks the living and dining, keeping the chef connected to guests and family.

Less than 50 metres from fantastic kids parkland and family picnic area, it is a home you don't want to miss!

First Home Owners - \$15,000 Government grant applies.

🛏 4 🚿 2 🚗 2

<b>Price</b>	SOLD for \$440,000
<b>Property Type</b>	residential
<b>Property ID</b>	903
<b>Floor Area</b>	218 m2

### AGENT DETAILS

Anne-Maree Johnson - 0414 415 219

### OFFICE DETAILS

Gold Coast  
PO Box 326 Oxenford QLD 4210  
Australia  
0414 415 219



The above information provided has been furnished to us by the vendor/s. We have not verified whether or not that information is accurate and do not have any belief in one way or the other in its accuracy. We do not accept any responsibility to any person for its accuracy and do no more than pass it on. All interested parties should make and rely upon their own inquiries in order to determine whether or not this information is in fact accurate.